



RUSSIA MILITARY

Quick Reference Guide

T-72

Combat Weight (tons): 44.5

Max Speed (km/h): 60

Main Armament (mm): 125

Max Effective Range (km): 2-3



DISTRIBUTION A:

Approved for public release; distribution is unlimited.

TRADOC Deputy Chief of Staff, G-2: 1-757-501-6236

Email: usarmy.jble.tradoc.list.hq-tradoc-g-2-ops@mail.mil

U.S. Army Training and Doctrine Command



Table of Contents

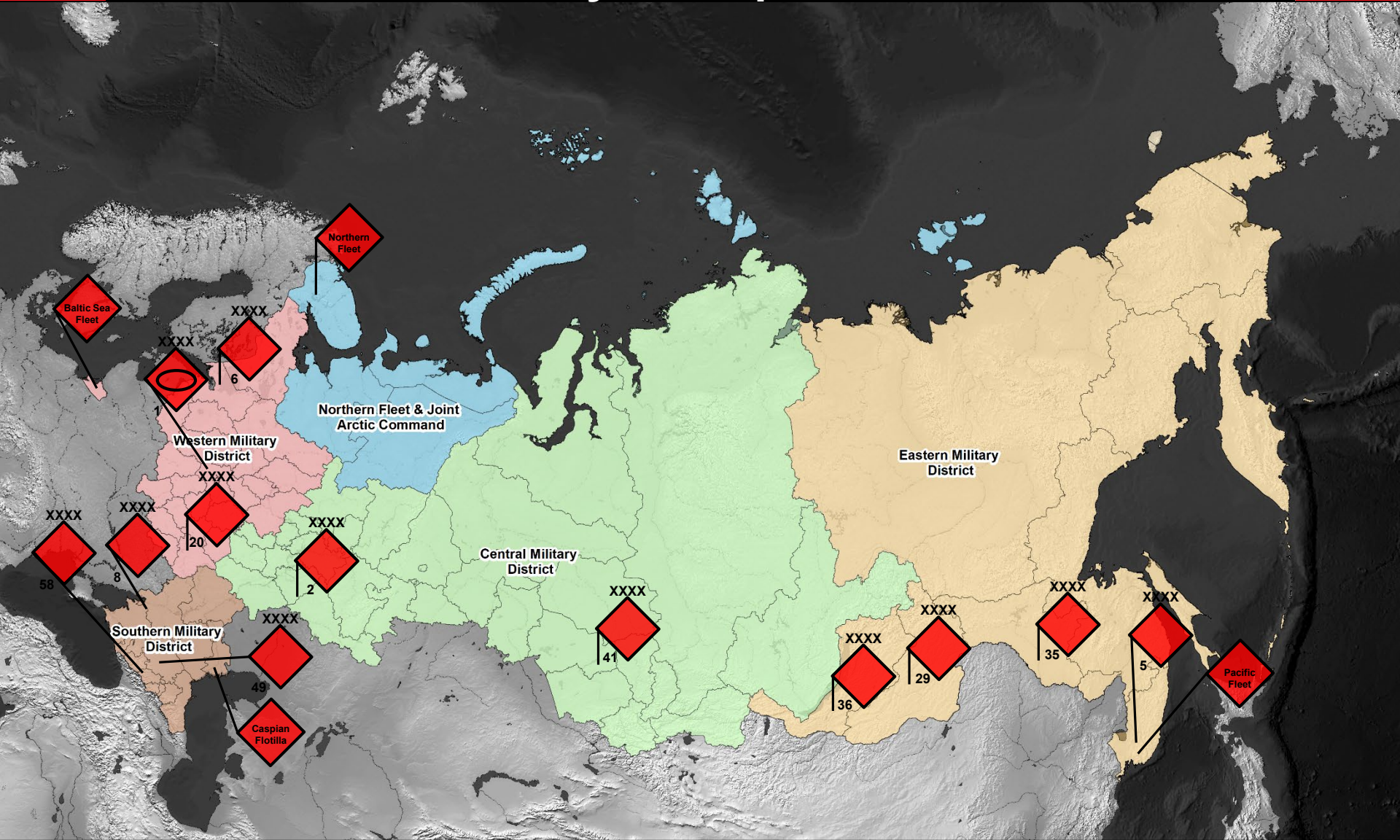
Russian Military Districts Overview	3
Russian Military Headquarters Overview	4
Typical Table of Organization and Equipment (TO&E).....	5-6
Military Districts and Order of Battle	7-19
Western Military District	8
Western Military District Order of Battle	9-10
Southern Military District	11
Southern Military District Order of Battle	12-13
Central Military District	14
Central Military District Order of Battle	15
Eastern Military District	16
Eastern Military District Order of Battle	17
Northern Fleet and Arctic Joint Strategic Command.....	18
Northern Fleet and Arctic Joint Strategic Command Order of Battle.....	19
Airborne Forces Order of Battle	21-22
Ratnik.....	24
Equipment.....	26-32
Russian Small Arms and RPGs.....	26
Russian Anti-Tank Guided Missiles.....	27
Russian Combat Vehicles.....	28
Russian Indirect Fire.....	29
Russian Air Defense.....	30
Russian Helicopters in Western District.....	31-32
Rank Structure.....	34
Appendix A Symbology Key.....	36
Appendix B Quick Facts.....	37-38

Russian Military Districts Overview



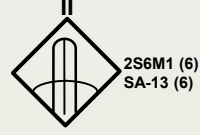
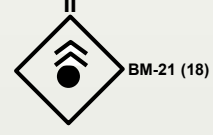
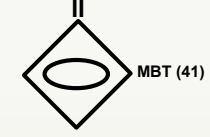
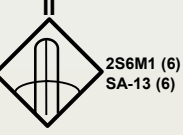
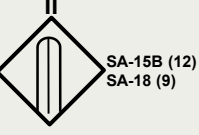
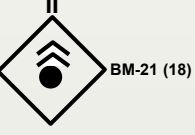
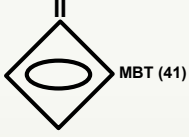
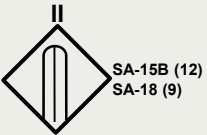
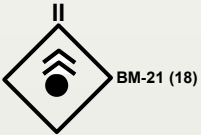
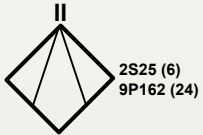
Moscow implemented a new Joint Strategic Command (OSK) structure in 2010 to better facilitate joint military operations. Russia converted its six military districts into four OSKs. In 2015, Russia created a fifth OSK, the Northern Fleet, to improve its capability to project military power into the Arctic and to take advantage of the opening of the Russia's Northern Sea Route.

Russian Military Headquarters Overview

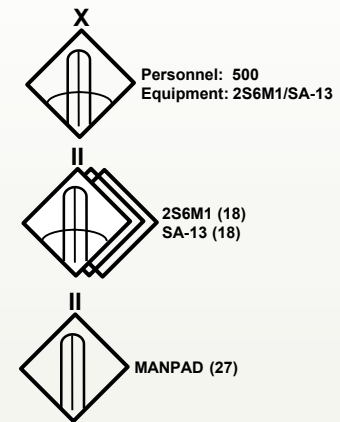
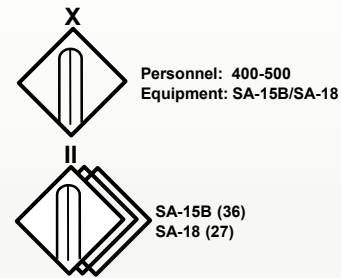
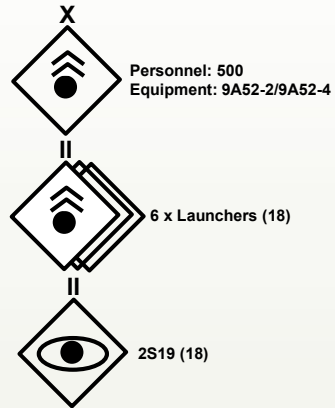
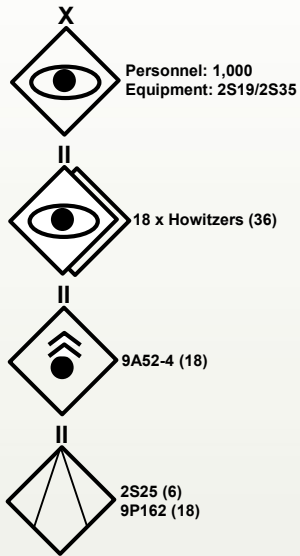


Since 1862, Russian military forces have aligned under military districts based off territorial association. Territorial divisions are utilized to provide more efficient management of units, their training, and activities related to combat readiness. A military district command has units of all military branches (Ground Forces, Air Force and Air Defenses, Navy) under their supervision.

Typical TO&E

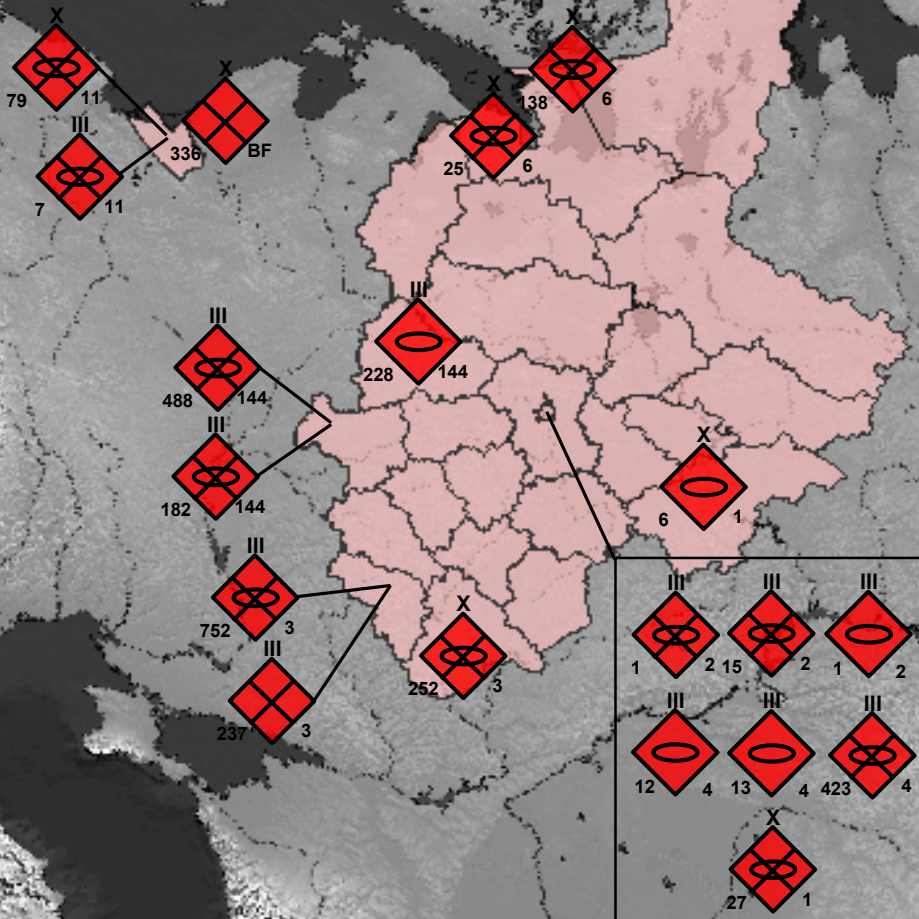


Typical TO&E



Military Districts & Order of Battle

Western Military District



COMMAND: The Western Military District is headquartered in St Petersburg, Russia

Personnel (active): 150,000



Western Military District Order of Battle

XXXX



6

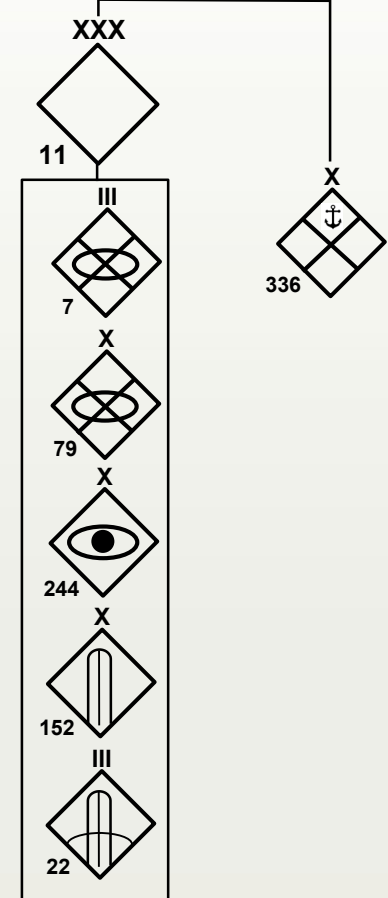
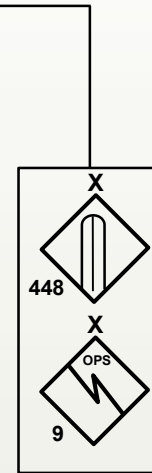
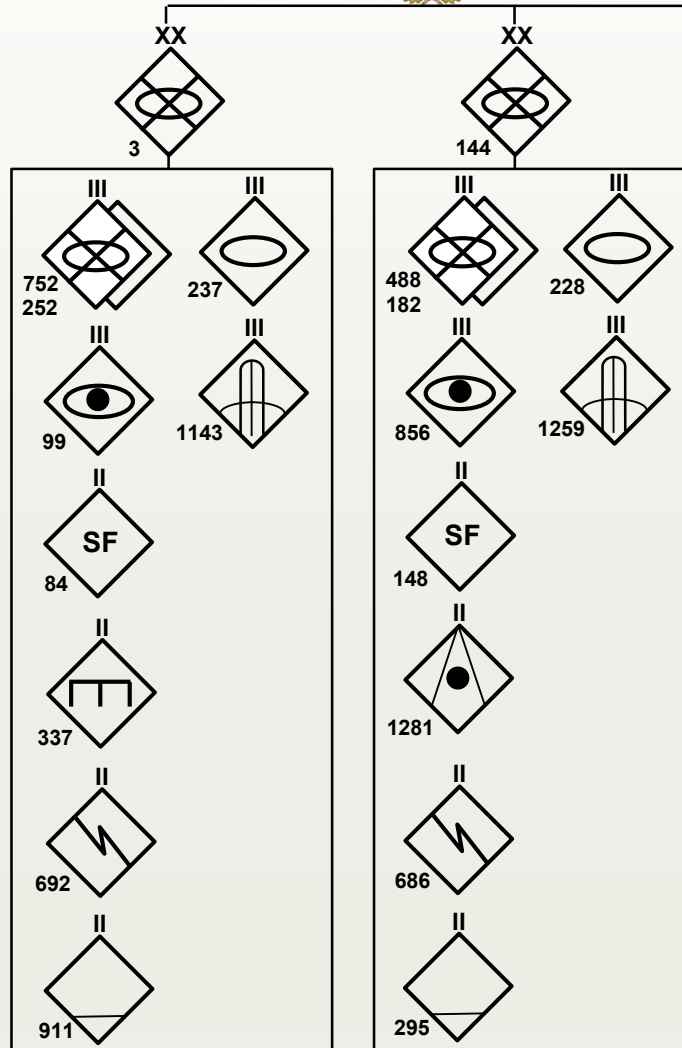
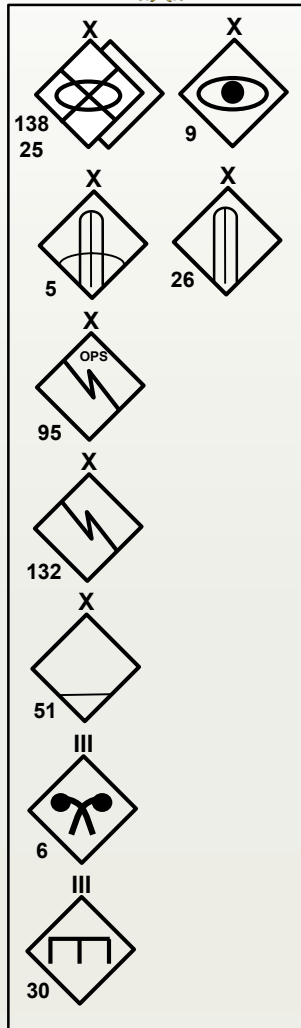
XXXX



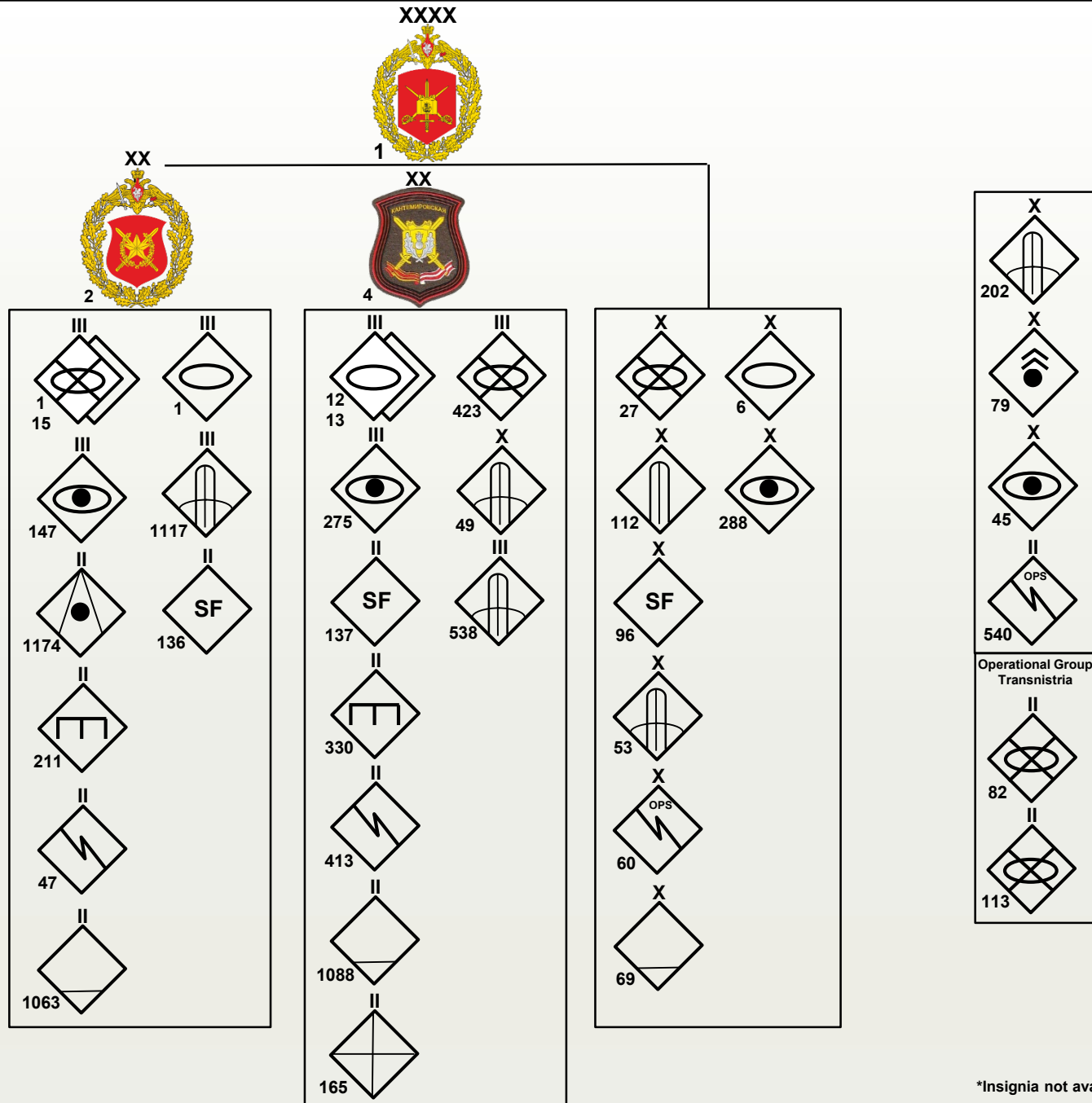
20



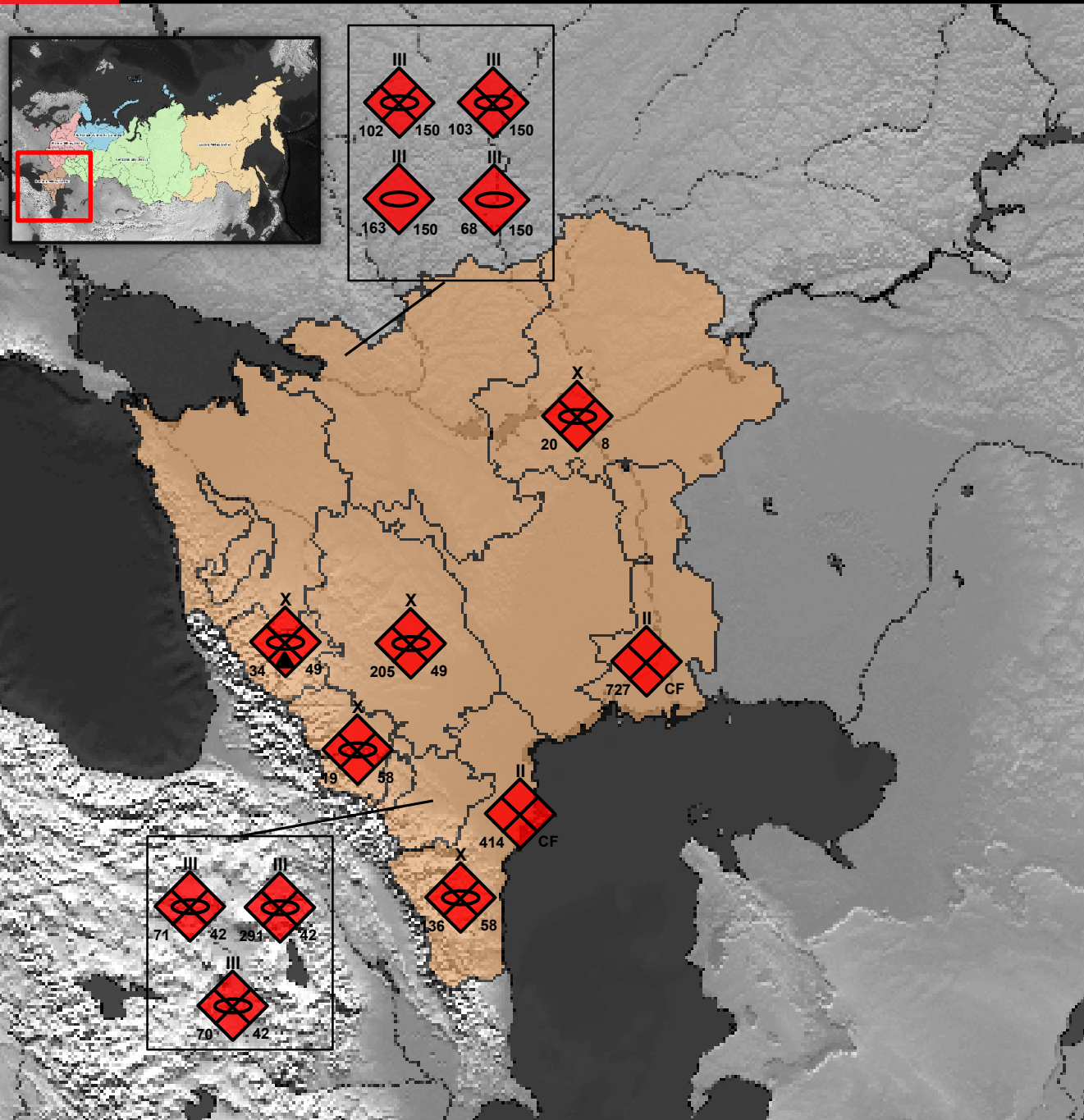
Baltic Sea Fleet



Western Military District Order of Battle



Southern Military District

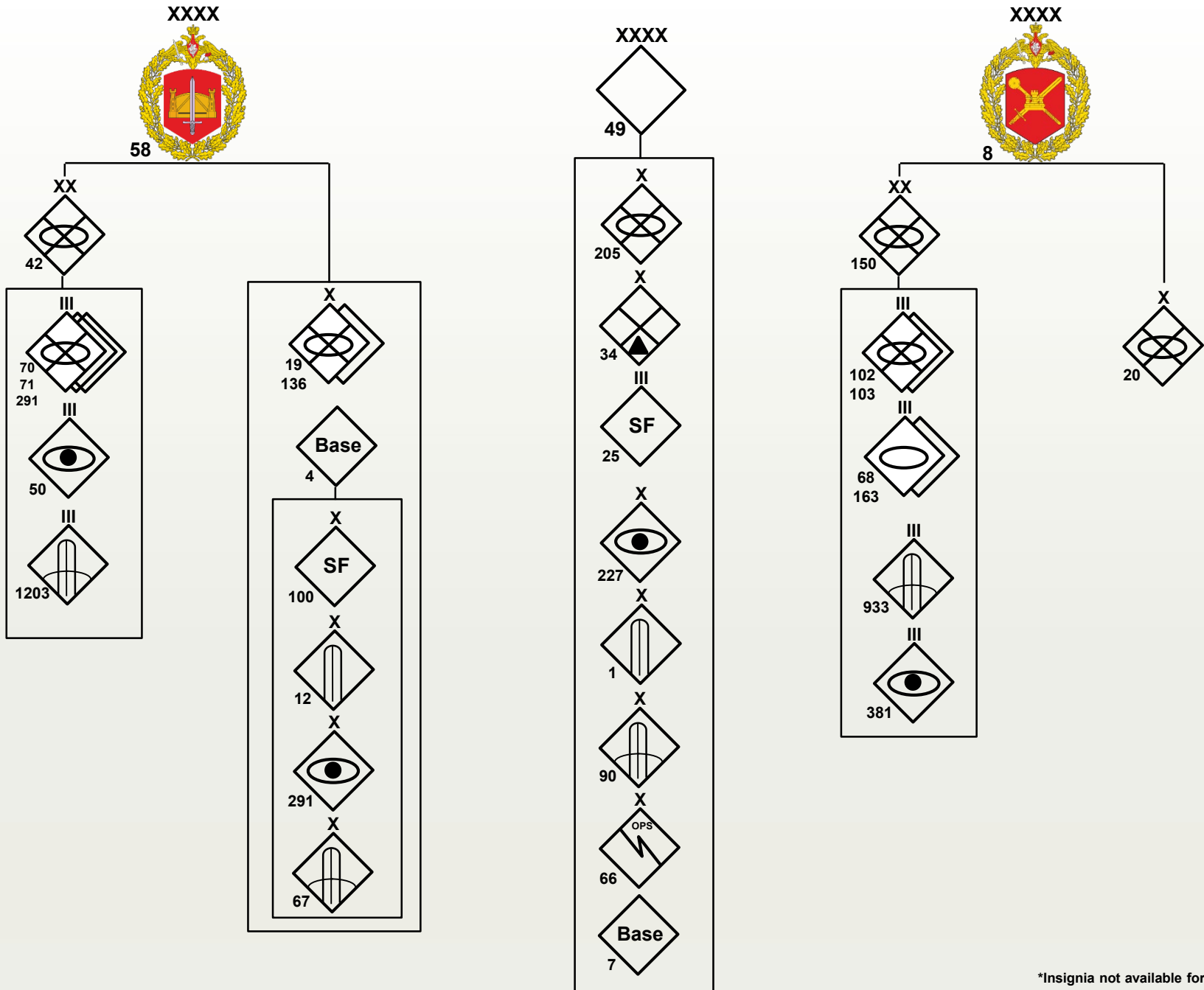


COMMAND: The Southern Military District is headquartered in Rostov-On-Don, Russia

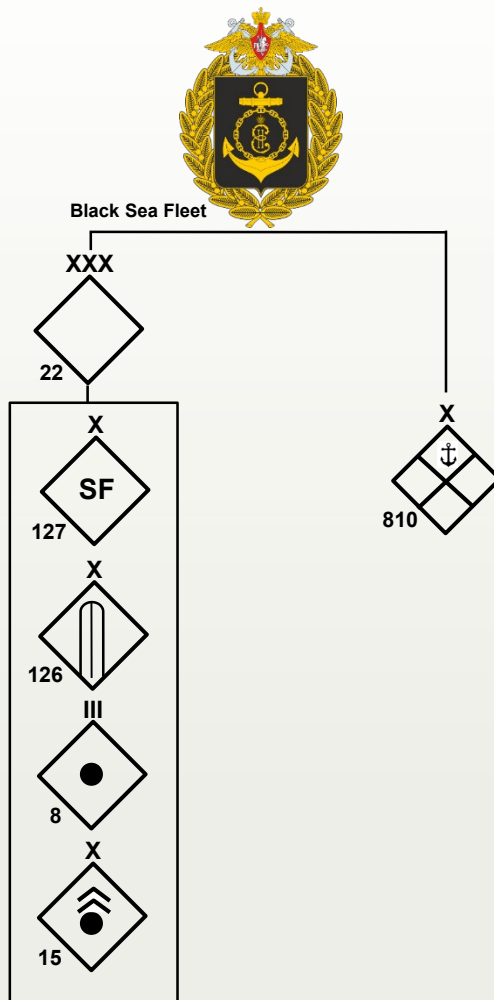
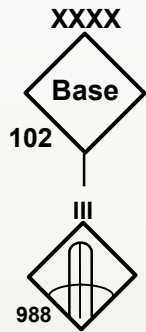
Personnel (active): 100,000



Southern Military District Order of Battle



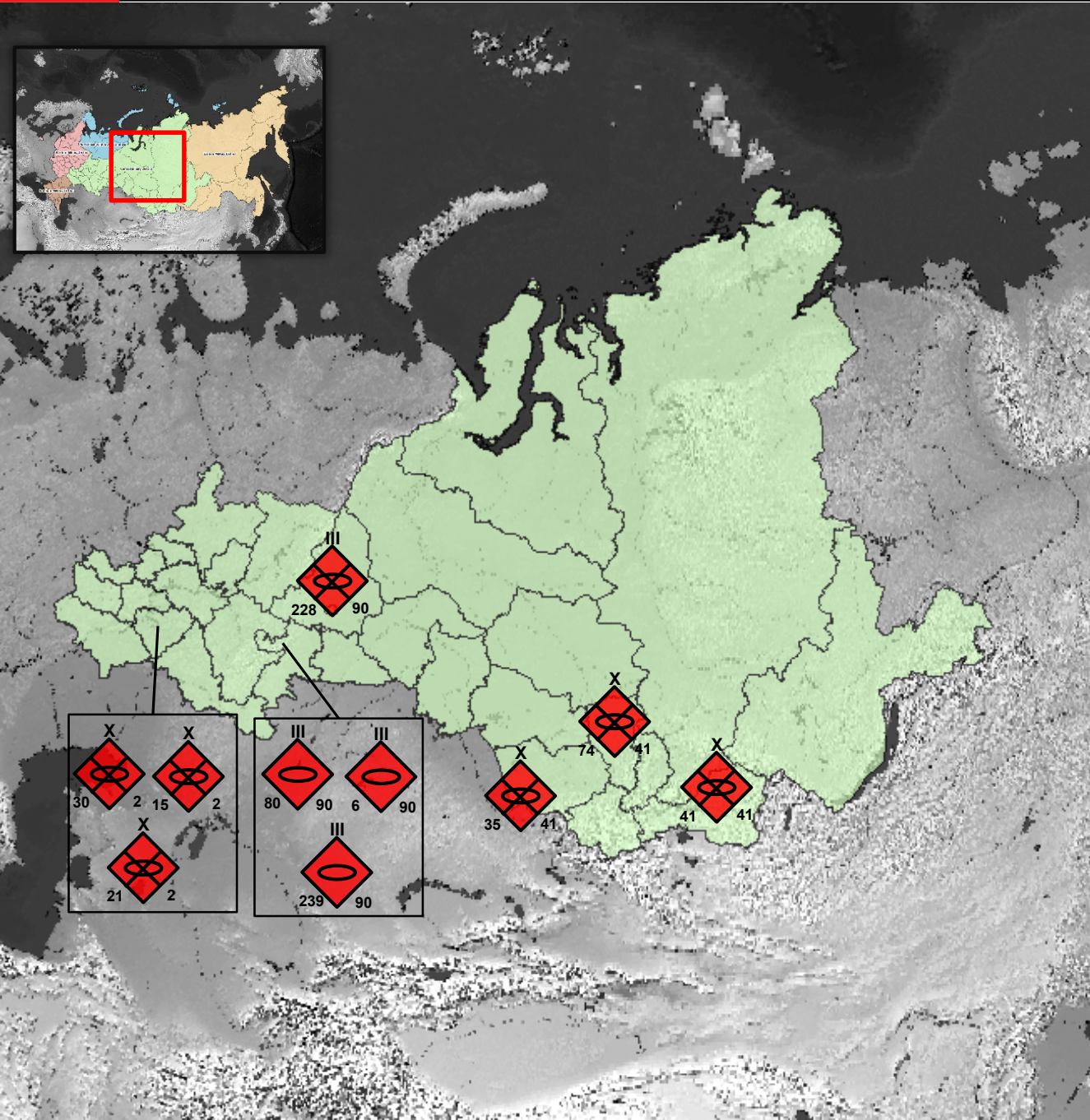
Southern Military District Order of Battle



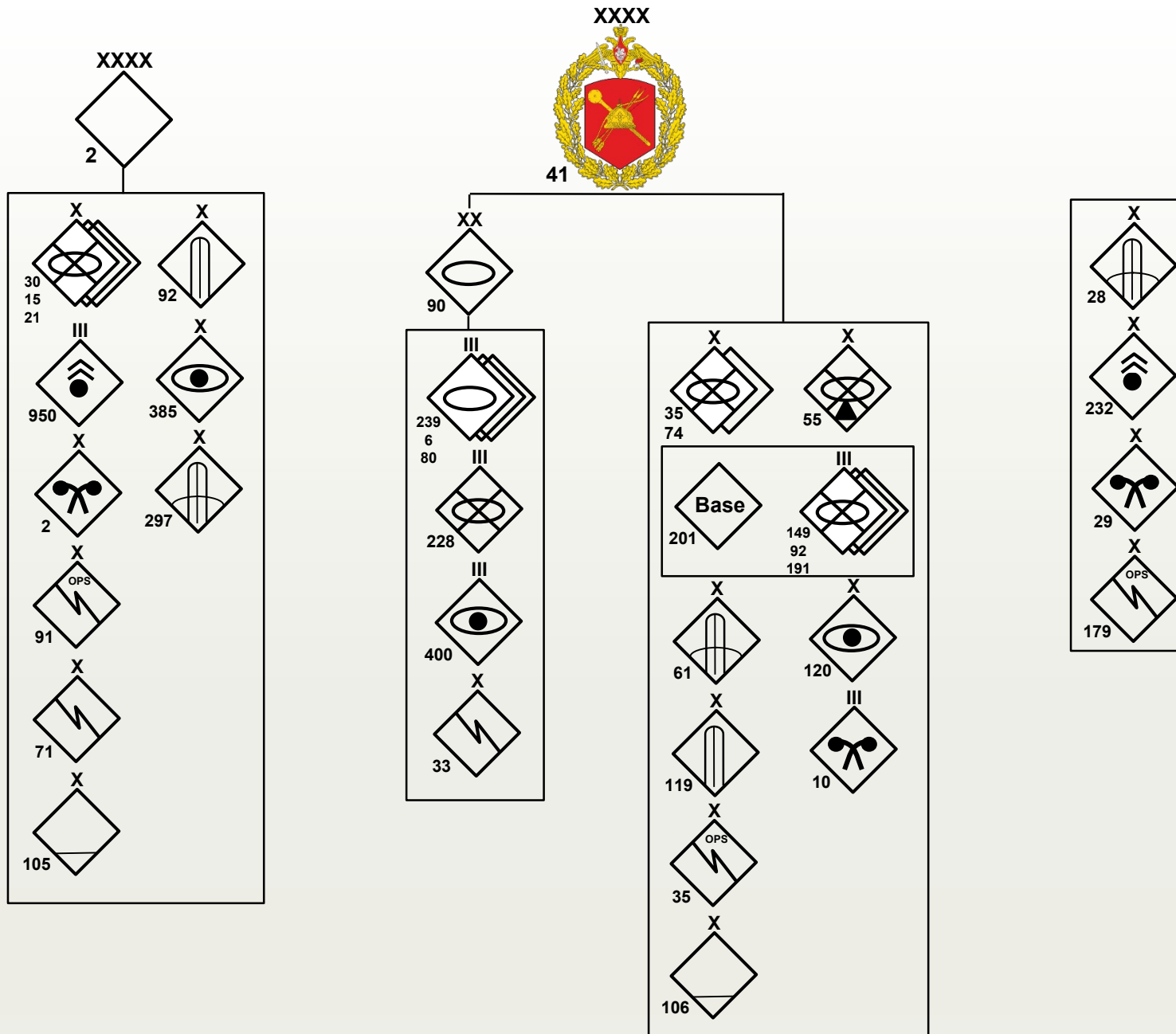
Central Military District

COMMAND: The Central Military District is headquartered in Khabarovsk

Personnel (active): 200,000



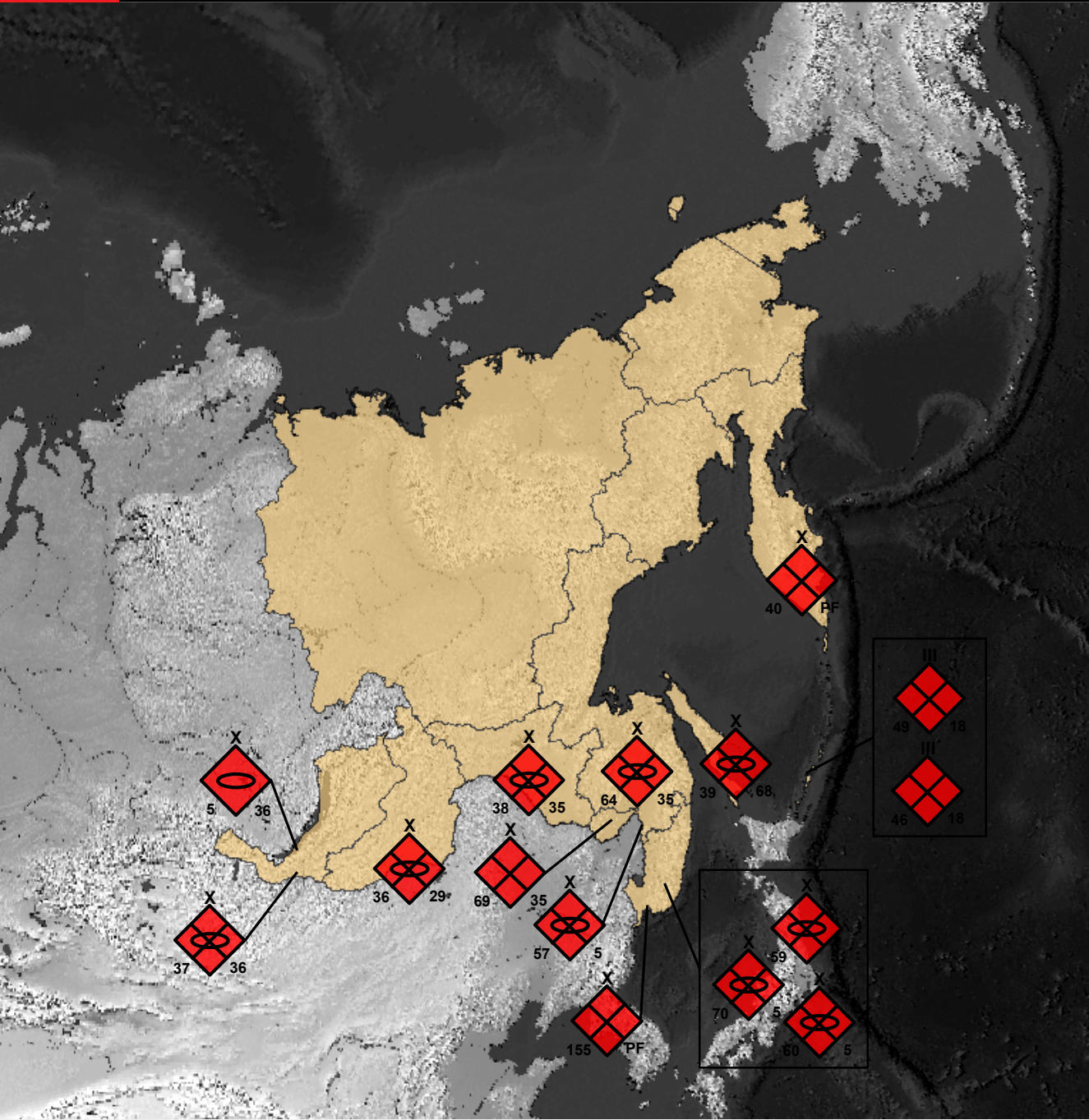
Central Military District Order of Battle



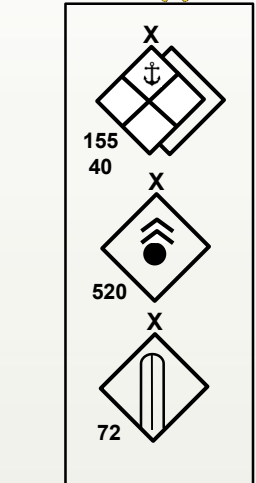
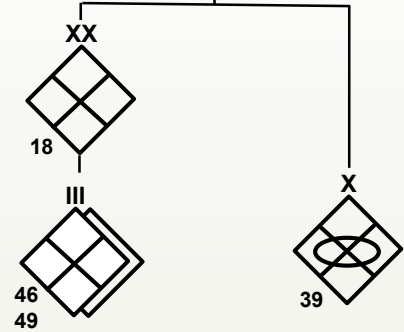
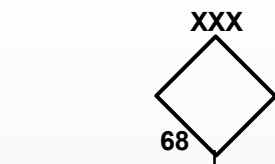
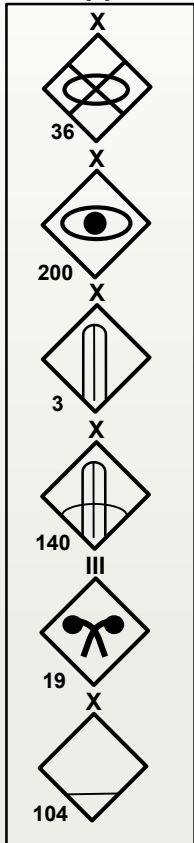
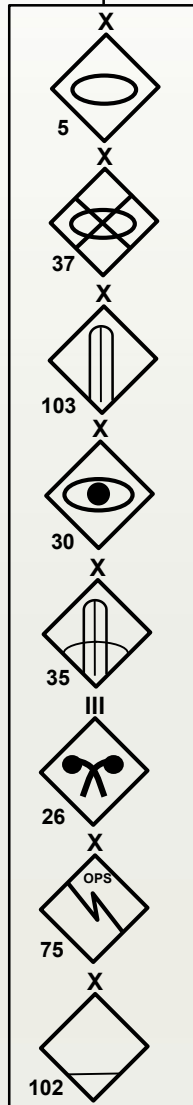
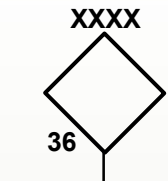
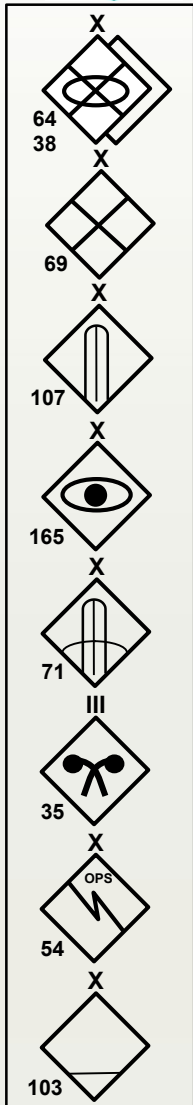
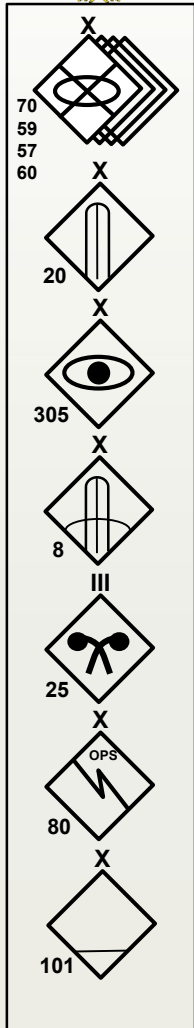
Eastern Military District

COMMAND: The Eastern Military district is headquartered in Khabarovsk, Russia

Personnel (active): 200,000



Eastern Military District Order of Battle



*Insignia not available for all units.

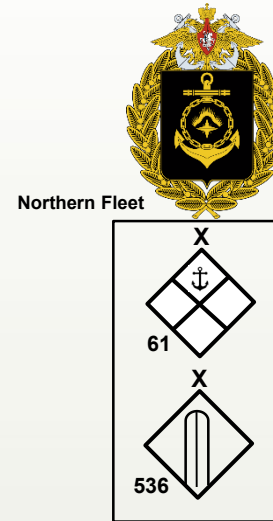
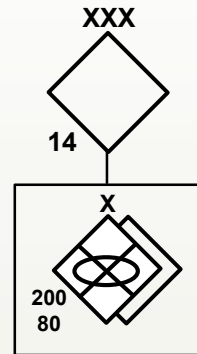
Northern Fleet and Arctic Joint Strategic Command



COMMAND: The Northern Fleet and the Joint Arctic Command is headquartered in Severomorsk, Russia

Personnel (active): 50,000





“VDV”

Airborne Forces

Airborne Forces Order of Battle

XXX



XX



7

XX



76

XX



98

XX



106

X



11

108 247	1141
3	162
629	185
743	
6	
1681	

104 234	1140
4	175
656	242
728	
7	
1682	

217 331	1065
5	215
661	243
647	
15	
1683	

51 137	1182
1	173
388	110
731	
43	
1060	

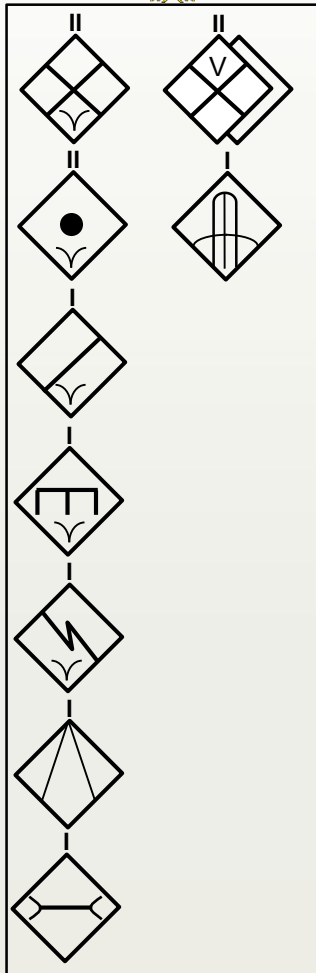
498 499	9

*Insignia not available for all units.

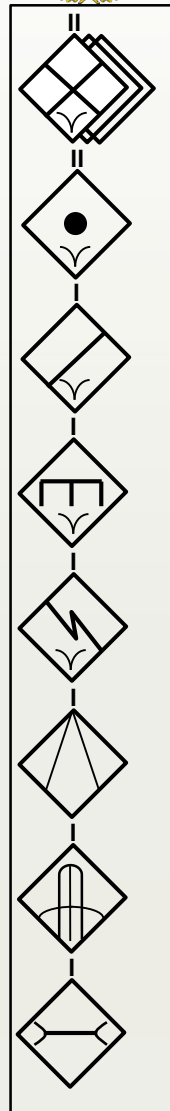
Airborne Forces Order of Battle



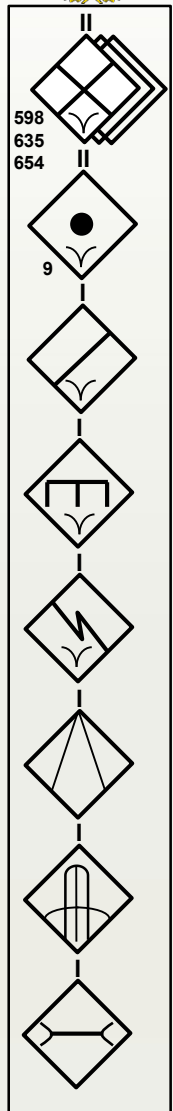
31



56

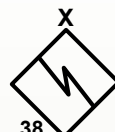


83

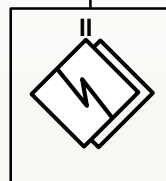


598
635
654

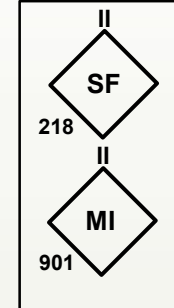
9



38



45

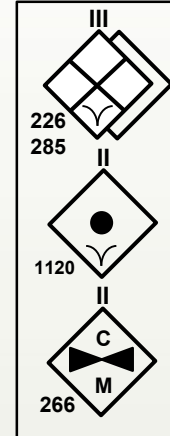


218

901



242



226
285

1120

266

Ratnik Combat Kit

Ratnik Russian Military Combat Kit



The Russian military issues *Ratnik* as load-bearing equipment and combat gear. *Ratnik* is meant to provide all Russian soldiers a combat kit suited for future combat environments. The total kit is over forty pieces and worn with an all-season camouflage uniform that includes body armor (6B45) and a lightweight helmet (6B47) that can be fitted with advanced vision gear. Modular elements include additional armored thigh and shoulder trauma plates for infantry, and the modern Strelets voice, data, and video communications system with a GLONASS satellite navigation module.

Equipment

Russian Small Arms and RPGs



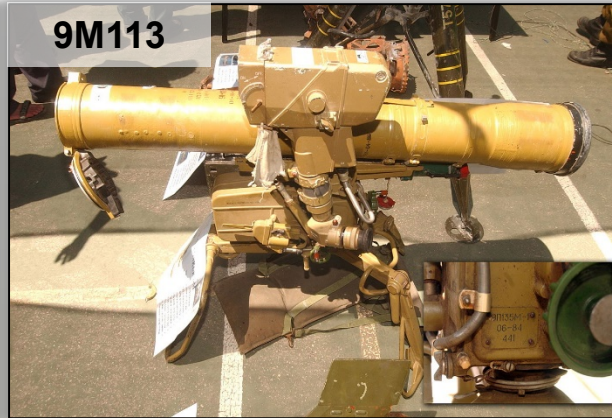
Weapon System	Makarov (Pistol)	AK-74 (Automatic Rifle)	RPK (Machinegun)	PKM (Machinegun)	RPG-7 (Grenade Launcher)	SPG-9 (Recoilless Rifle)	AGS-17 (Grenade Launcher)
Caliber (mm)	9	5.45	7.62	7.62	40	73	30
System Weight (kg)	.81	3.6	6.8	15.5	6.3	47	31
Max Effective Range (m)	50	500	1000	1500	300	1300	800
Rate of Fire (per min)	30	650	600	650	4-6	6	350-400
Rounds per magazine	8	30	40/75	100-200	3	6	29
Armor Penetration (mm)	-	-	-	-	260	400	-
Crew	-	-	-	-	2	4	2

Russian Anti-Tank Guided Missiles (ATGM)

9M111



9M113



9M115



9M115-2



9M133



Weapon System	9M111 (Fagot)	9M113 (Konkurs)	9M115 (Metis)	9M115-2 (Metis-M)	9M133 (Kornet)
Caliber (mm)	120	135	93	130	152
Max Effective Range (m)	2000	4000	1000	2000	5500
Min Effective Range (m)	70	70	40	80	100
Armor Penetration (mm)	400	600	460	1000	1300
Guidance System	SACLOS	SACLOS	SACLOS	SACLOS	SACLOS
System Weight with Rocket (kg)	34	37.1	16.5	24.3	55
Crew	2	2-3	2	3	2

Russian Combat Vehicles

T-90A



BTR-90



BMP-3U



BMD-4



Weapon System	T-90A	BTR-90	BMP-3U	BMD-4
Combat Weight (tons)	46.5	20.9	18.7	13.4
Max Speed (km/h)	60	100	70	70
Main Armament (mm)	125	30	30	100/30
Basic Load	HE / AP AT-5 Spandrel PKT coax	2A42 30mm AT-5 Spandrel AGS-17D PKT Coax	500 x 30mm 22 x 100mm 3 x GLATGM PKT Coax	100mm 2A70 2A42 30mm PKT Coax
Max Effective Range (km)	5	4.5	5	7
Rate of Fire (per min)	5	50	50	12

Russian Indirect Fire Key

D-30



TOS-1



2S19



9A52-2



Weapon System	D-30	TOS-1	2S19	9A52-2
Combat Weight (tons)	2.8	45.3	42	43.7
Max Speed (km/h)	60	60	60	60
Main Armament (mm)	122	220	152.4	300
Basic Load	50	30	50	12
Rate of Fire (per min)	10-12	120	6-8	24-26
Max Effective Range (km)	30	17	60	90

Russian Air Defense

SA-17



ZSU-23



SA-21



SA-22



Weapon System	SA-17	ZSU-23	SA-21	SA-22
Combat Weight (tons)	35	19	20	30
Max Speed (km/h)	80	50	60	50
Main Armament (mm)	400	4x23 2A7	40N6E	2A38M 30mm 23YA6 missile
Basic Load or Stowage	4	2000	4	12x23Ya6 2000x30mm
Rate of Fire (per min)	24	4,000	17-20	4,000
Max Effective Range (km)	40	20	200	50 30

Russian Helicopters in Western District

Ka-52A



Mi-28N



Mi-35



Mi-26



Weapon System	Ka-52A (Attack)	Mi-28N (Attack)	Mi-35 (Attack)	Mi-26 (Utility/Transport)
Combat Weight (tons)	10.8	11.5	11.5	56
Max Speed (km/h)	310	320	310	295
Armaments	1x30mm Cannon (460 Rounds)	1x30mm Cannon (300 Rounds)	Two-barrel 23mm cannon	-
	12 x Vikhr AT 4 x Igla-V AA	16 x Ataka	Ataka-V AT/Shturm-V AT/ Igla AA	-
Crew/Troops	2	2	2/8	5/80
Max Effective Range (km)	520	460	435	1,952 31

Russian Helicopters in Western District

Mi-8MTV-5



Mi-24



Mi-8



Weapon System	Mi-8MTV-5 (Attack/Utility)	Mi-24 (Attack)	Mi-8 (Utility/Transport)
Combat Weight (tons)	13	12.5	12
Max Speed (km/h)	250	310	250
Armaments	2 x 7.62 mm machine guns	23mm twin-barrel cannon	7.62mm and 12.7mm trainable machine guns
	Ataka-V AT/Shturm-V AT/Igla AA	9M114 Shturm (AT-6 Spiral)	9M17P Skorpion/9M114 Shturm/9M120 Vikhr AT/Igla-V AA
Crew/Troops	3/26	3/8	3/24
Max Effective Range (km)	580	450	350

Rank Structure

Russian Military Rank Structure

Conscript and Contract Serviceman Ranks

	Field Uniform	Duty Uniform			
		Ground Forces	Aerospace Defense Forces	Navy	
Senior Warrant Officer					Senior Warrant Officer
Warrant Officer					Warrant Officer
Starshina					Petty Officer of the Ship
Senior Sergeant					Senior Petty Officer
Sergeant					Petty Officer 1st Class
Junior Sergeant					Petty Officer 2nd Class
Private First Class					Senior Sailor
Private					Sailor

Officer Ranks

	Field Uniform	Duty Uniform			
		Ground Forces	Aerospace Defense Forces	Navy	
Marshal of the Russian Federation					
General of the Army					Admiral of the Navy
Colonel General					Fleet Admiral
Lieutenant General					Vice Admiral
Major General					Rear Admiral
Colonel					Captain 1st Class
Lieutenant Colonel					Captain 2nd Class
Major					Captain 3rd Class
Captain					Captain-Lieutenant
Senior Lieutenant					Senior Lieutenant
Lieutenant					Lieutenant
Junior Lieutenant					Junior Lieutenant

Appendix

Appendix A "Symbology Key"

	Air Assault Infantry		Communications		Mountain Infantry
	Airborne Infantry		Engineer		Mountain Motor Rifle
	Artillery		Infantry		Naval Infantry
	Anti-Aircraft Missile-Artillery		Logistics		Reactive Artillery
	Anti-Tank		Maintenance		Reconnaissance
	Anti-Tank Artillery		Medical		Self-Propelled Artillery
	Cargo Medium Lift		Military Base		Special Forces (Spetsnaz)
	CBRN		Anti-Aircraft Missile		Tank
	Command and Control		Motor Rifle		

Appendix B “Quick Facts”

Ground Troops or *Sukhoputniye Voyska* are the land warfighting component of the Russian Ministry of Defense. The Ground Troops constitute the largest component of the Russian Federation armed forces.

Motorized Rifle Troops units are the most abundant formations in Russia's Ground Troops. Essentially mounted infantry, these are highly mobile forces tasked with holding territory, repulsing enemy attacks, breaking through enemy defenses, capturing important areas, and defeating the enemy.

Tank Troops are the main strike component of the Ground Troops. They support Motorized Rifle Troop missions with direct fires during meeting engagements.

Missile Troops and Artillery are the main means of indirect fires for Russian combined arms operations. Missile Troops and Artillery forces are organized into missile, rocket-artillery, and combined artillery units. Missile units operate close/short-range ballistic missiles. Rocket-artillery units operate multiple rocket launchers (MLRs), and combined artillery units operate composite towed or self-propelled artillery and MLRs.

Air Defense Troops provide air defense for the Ground Troops. These units are equipped with anti-aircraft missiles, anti-aircraft artillery, anti-aircraft gun-and-missile systems, and portable anti-aircraft missile systems.

Reconnaissance Troops perform a wide range of tasks in order to provide decision makers with information about enemy strength, disposition, terrain, and weather conditions.

Engineer Troops perform a variety of specialized tasks, including the construction of fortifications, installation of obstacles (mine fields, etc.), the preparation of field deployment locations, the preparation and maintenance of deployment routes, the construction of bridges and ferry crossings, and water purification.

Nuclear Biological Chemical Defense Troops are specialized forces tasked with mitigating the effects of nuclear, biological, or chemical contamination.

Signal Troops are specialized forces designed for the deployment and maintenance of mobile redundant command, control, and communications systems.

Since 2010, there have been significant improvements in the condition of Russian ground arms, including the modernization and upgrade of the main battle tank (MBT) inventory. The active inventory includes the T-72, T-80U, and T-90 MBTs.

The T-72 is one of Russia’s oldest active MBTs and has been upgraded to include substantial enhancements in explosive reactive armor, electronic components, and enhanced navigation systems.

Russia remains the second largest arms exporter worldwide, in terms of the annual value of both its export contracts and equipment deliveries. Russia is an exporter of nearly every category of conventional military equipment, from small arms to long-range air defense systems and submarines.

Russia’s Airborne Troops or **VDV (Vozdushno-Desantniye Voyska)** is an independent arm of service within the Russian Federation armed forces. In its role as rapid response or initial assault forces, the VDV may be used to achieve specific objectives that shape the battle space for follow-on ground forces.

These may include:

- Seizing key terrain (i.e., bridges, airports, and seaports).
- Establishing blocking positions and vertical envelopment of a retreating enemy.
- Disrupting enemy logistical supplies, communications, and command centers.
- Destroying high value targets.

